

# Practice Test - 2

Class - VI

( For students moving to Class VII )

## SUBJECTS

### Science

- Physics
- Chemistry
- Mental Ability

#### For More information

Call us: +91-87807 55750

E-Mail us: [isat@infinityscholarshub.com](mailto:isat@infinityscholarshub.com)



# ISAT Practice Test

2

Time: 1 Hr 15 Min

Maximum Marks: 168

## CLASS-6

### General Instructions

1. There are a total of **42** multiple choice questions.
2. This test contains 3 section Science, Mathematics and Mental Ability).
3. **Marking Scheme:**  
+4 Correct Response, -1 Incorrect Response, 0 No response

DATE: \_\_\_\_/\_\_\_\_/\_\_\_\_

NAME: .....

### SCIENCE

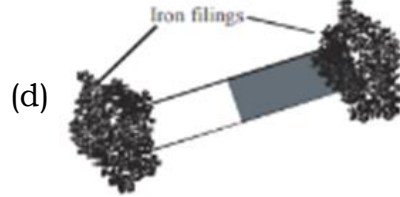
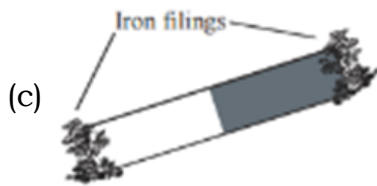
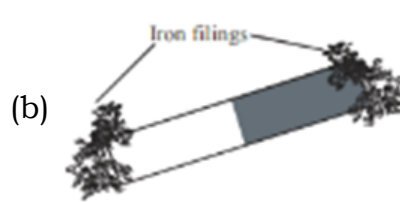
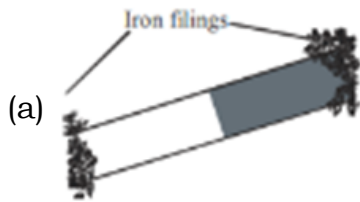
- (1) Which adaptation helps the camel to survive in hot and dry desert?  
(a) It has a layer of fat under its skin  
(b) It sleeps during the day and is active at night  
(c) It stores fat in its hump which can be used in emergency.  
(d) It stores water in its long neck
- (2) Ribs are attached to which bone in front?  
(a) Backbone (b) Femur (c) Sternum (d) Humerus
- (3) Which of the following information completes the below table?

Animal	Characteristics
X	Migrates towards warmer region
Polar bear	Y
Penguin	Z

- (a) X-Siberian crane, Y-Black colour, Z-Strong, large beak  
(b) X-Lion-tailed macaque, Y-White fur, Z-Heavy body  
(c) X-Toucan bird, Y-Heavy body, Z-White fur  
(d) X-Siberian crane, Y-White fur, Z-Thick layer of the below skin
- (4) Which of the following is an example of a chemical change?  
(a) Deflating the balloon.  
(b) Taking ice cubes and melting them by giving heat.  
(c) A plant collecting sunlight and turning it into food.  
(d) All of these

Page No: 1

(5) Which of the following figure shows the strongest magnet?



(6) Which of the following would reflect the most light?

- (a) An object with a crumpled surface.
- (b) A smooth, shiny object with flat surface.
- (c) A rough object with curved surface.
- (d) A dark, shiny object with curved surface.

(7) Which of the following method is used to separate stones from grains?

- (a) Threshing
- (b) winnowing
- (c) Hand picking
- (d) sieving

(8) An oiled paper is

- (a) opaque
- (b) transparent
- (c) translucent
- (d) none of these

(9) Eating some vegetables without cooking is advised because

- (a) they are fresh
- (b) they are cold
- (c) vitamins are preserved
- (d) germs grow in cooked food

(10) Which of these plant has taproot?

- (a) maize
- (b) grass
- (c) wheat
- (d) carrot

(11) During the process of photosynthesis

- (a) carbon di oxide is absorbed
- (b) sunlight is required
- (c) oxygen not required
- (d) all of these

(12) Pivot joint is present

- (a) in neck region
- (b) between bones of ankle
- (c) between bones of fore arm and wrist
- (d) None of these

(13) Electric current is carried from a power house by

- (a) Fuse
- (b) live wire
- (c) Earth wire
- (d) neutral wire

(14) A fighter plane is moving with a speed of 180 km/h. what is the speed in m/s?

- (a) 10 m/s
- (b) 50 m/s
- (c) 200 m/s
- (d) 500 m/s

(15) Sandstone is an example of which of the following rock

- (a) Metamorphic rock
- (b) Sedimentary rock
- (c) Igneous rock
- (d) None of the above

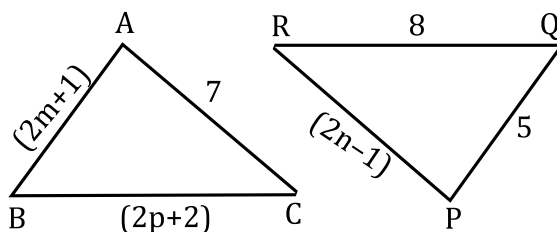
(16) In a solution of sugar and water, which is solute?

- (a) Sugar
- (b) water
- (c) salt
- (d) none of these

- (17) Which of these minerals are used to make building materials?  
 (a) Magnetite and bauxite (b) Limestone and quartzite  
 (c) Gypsum and calcite (d) marbels and shale
- (18) Mass : kilogram :: temperature: kelvin:: Time : second?  
 (a) length: kilometer (b) Length: meter  
 (c) Length: centimeter (d) all of the above
- (19) Which of the following does not show periodic motion?  
 (a) A car moving at a constant speed  
 (b) Pendulum  
 (c) Hands of a clock  
 (d) Revolution of Earth around the sun
- (20) The SI unit of velocity is  
 (a) Gram (b) pound (c) m/s (d) km/h
- (21) The new substance formed during a chemical reaction are called  
 (a) reactants (b) products (c) molecules (d) atoms

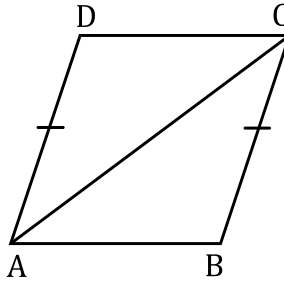
### MATHS

- (22) 7 steps to the left of 4 on number line give  
 (a) 3 (b) 11 (c) -11 (d) -3
- (23) The speed of a train is  $75\frac{1}{3}$  km/hr. What is the distance travelled by train in  $1\frac{3}{5}$  hrs?  
 (a)  $12\frac{8}{15}$  km (b)  $1200\frac{8}{15}$  km (c)  $120\frac{8}{15}$  km (d)  $47\frac{1}{2}$  km
- (24) The difference of one fifth of a number and 4 is 3. Which of the following can be the number?  
 (a) 7 (b) 35 (c) 21 (d) 14
- (25) A pair of lines which do not intersect at any point are called \_\_\_\_\_ lines.  
 (a) Perpendicular (b) Parallel (c) Concurrent (d) Intersecting
- (26) Which number to be added to 2, 3, 5 and 7 to be in proportion?  
 (a) 5 (b) 1 (c) 2 (d) 3
- (27) In the given figure, triangle ABC is congruent to triangle PQR. Then, find the value of  $(m + 2n + 3p)$



- (a) 8 (b) 10 (c) 17 (d) 19
- (28) The standard form of 65950 is \_\_\_\_\_.  
 (a)  $6.59 \times 10^6$  (b)  $6.595 \times 10^5$  (c)  $6.595 \times 10^4$  (d)  $6.59 \times 10^5$

- (29) If  $x + \frac{1}{x} = 11$ , then the value of  $x - \frac{1}{x}$  is =.....
- (a)  $\sqrt{117}$                       (b)  $\sqrt{110}$                       (c)  $\sqrt{119}$                       (d) 10
- (30) In the given figure,  $AD = BC$  and  $AD \parallel BC$ , then



- (a)  $AB = AD$                       (b)  $AB = DC$                       (c)  $BC = CD$                       (d)  $AD = CD$
- (31) Factors of  $(5x^4 - 20y^4)$  is
- (a) 5                                      (b)  $x^2 - 2y^2$                       (c)  $x^2 + 2y^2$                       (d) All of these
- (32) The decimals 0.919, 9.19, 0.0919, 91.96 and 0.9919 can be arranged in descending order as
- (a)  $91.96 > 0.9919 > 0.0919 > 9.19 > 0.919$   
 (b)  $91.96 > 9.19 > 0.9919 > 0.919 > 0.0919$   
 (c)  $91.96 > 0.9919 > 9.19 > 0.0919 > 0.919$   
 (d)  $91.96 > 9.19 > 0.919 > 0.0919 > 0.9919$
- (33) The greatest common factor of 120 and 192 is \_\_\_\_\_
- (a) 12                                      (b) 24                                      (c) 48                                      (d) 84
- (34) The least 5-digit number which is exactly divisible by each of 2, 3, 4, 5, 6 and 7 is \_\_\_\_\_
- (a) 9650                                      (b) 420                                      (c) 10080                                      (d) 9660
- (35) Which of the following is not equal to  $2 \times 3 \times 5$ ?
- (a) LCM of 15 and 2                                      (b) HCF of 90 and 150  
 (c) LCM of 30 and 25                                      (d) Prime factorisation of 30

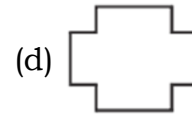
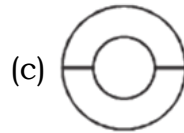
### **MENTAL ABILITY**

- (36) A man is facing North-East. He turns  $90^\circ$  in the clockwise direction and then  $45^\circ$  in the anti clockwise direction. Which direction is he facing now?
- (a) North                                      (b) South-West                                      (c) West                                      (d) East
- (37) In a certain code, "BAGGINS" is written as "\$@ab%@" . How is AGING written in that code?
- (a) \$ab%#                                      (b) \$ab%a                                      (c) \$@b%#                                      (d) \$ab#@
- (38) Choose the missing term out of the given alternatives 3C, 6F, 10J, 15O, ?
- (a) 21T                                      (b) 20T                                      (c) 21U                                      (d) 20S
- (39) If the following four words are arranged in alphabetical order, which word will come in third?
- (a) Peacock                                      (b) Pencil                                      (c) Pear                                      (d) Past
- (40) Donald ranks 23<sup>rd</sup> from the bottom and 13<sup>th</sup> from the top in a class. How many students are there in the class?
- (a) 34                                      (b) 35                                      (c) 32                                      (d) 36

**(41)** In the following question, you are given a fig. (X) followed by four alternative figures such that one of the answer figures is embedded in fig. (X). Trace out the alternative figure which is embedded in fig. (X) as its part.



**(X)**



**(42)** Choose the water image of the following combination.

SARVATR75

(a) 2APVATP7

(b) 2RAVATP7

(c) 2APVATP7

(d) 2APVATP7



**CONGRATULATIONS**  
**ISAT 2022**  
**Toppers**



**Adya Sharma**



**Kavya Aga**



**krisha Kothiya**



**Hiya shah**



**Vandit Kotecha**

**For More information :- +91-87807 55750 E-Mail us :- [isat@infinityscholarshub.com](mailto:isat@infinityscholarshub.com)**

**Rajpath Complex,Vasna-Bhayli Main Rd, Near Bright Day School,Opp Essar Petrol Pump**

**CLASS-6-ISAT-PRACTISE TEST-2-ANSWER KEY**

<b>1.</b>	(c)	<b>2.</b>	(c)	<b>3.</b>	(d)	<b>4.</b>	(c)	<b>5.</b>	(d)	<b>6.</b>	(b)	<b>7.</b>	(c)	<b>8.</b>	(c)
<b>9.</b>	(c)	<b>10.</b>	(d)	<b>11.</b>	(d)	<b>12.</b>	(a)	<b>13.</b>	(b)	<b>14.</b>	(b)	<b>15.</b>	(b)	<b>16.</b>	(a)
<b>17.</b>	(c)	<b>18.</b>	(b)	<b>19.</b>	(a)	<b>20.</b>	(c)	<b>21.</b>	(b)	<b>22.</b>	(d)	<b>23.</b>	(c)	<b>24.</b>	(b)
<b>25.</b>	(b)	<b>26.</b>	(b)	<b>27.</b>	(d)	<b>28.</b>	(c)	<b>29.</b>	(a)	<b>30.</b>	(b)	<b>31.</b>	(d)	<b>32.</b>	(b)
<b>33.</b>	(b)	<b>34.</b>	(c)	<b>35.</b>	(c)	<b>36.</b>	(d)	<b>37.</b>	(b)	<b>38.</b>	(c)	<b>39.</b>	(c)	<b>40.</b>	(b)
<b>41.</b>	(b)	<b>42.</b>	(d)												